

Quick Installation Guide for MAC OS X

© Dynamode UK Ltd, All Rights Reserved. All Trade Marks Acknowledged



Before Getting Started

The WL-700N-M/MINI is a Windows and MAC OS X compatible Wireless 802.11n 150Mbps USB2.0 Adapter. The Mini CD that accompanies the product may not work in Slot Loading CD/DVD Drives and may not contain the up-to-date MAC Drivers. Please read further on for information how to locate and install MAC Drivers.

NOTE: Please make sure you have Administrative Rights on your MAC before installing the Wireless Drivers.

MAC OS X Supported Versions

The WL-700N-M/MINI uses the Ralink® RT3070 chipset. Currently, support is for 10.3/10.4/10.5/10.6

NOTE: Please make sure you have the latest MAC OS X System updates installed, via the 'Software Update' utility

1 Download the Drivers first

The latest MAC OS X Driver and Software Utility can be downloaded from the following website:

www.dynamode-drivers.com

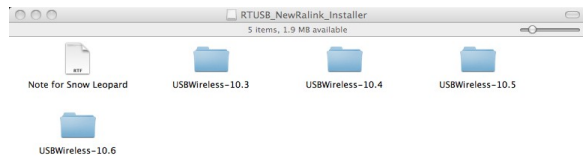
(select Wireless Devices, then Wireless USB, then your device part number. Select Mac Link USB RT2870/RT2770/RT307X)

NOTE: This link may or may not ask you for a name and email address before downloading the .dmg file. This is purely for statistical information only.

2 Selecting the Downloaded Drivers

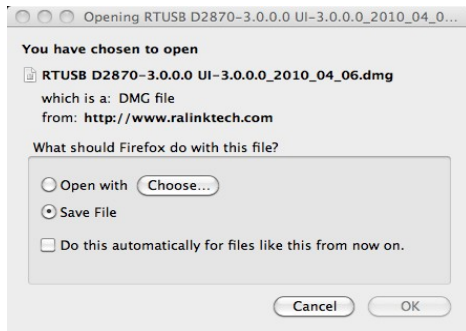
Once the Ralink .dmg file has been downloaded, please locate and double-click on the file.

Click on the Ralink Installer Icon and the following screen will be displayed:



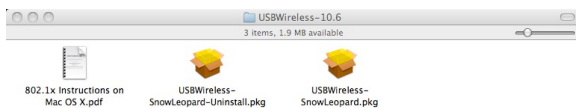
Select the MAC OS X folder that applies to you

Now proceed to Step 3 to install the .pkg file



3 Installing the Wireless Driver

Once the Ralink .dmg file has been downloaded, please locate and double-click on the file installation .pkg file:



4 Starting the Wireless Installer

Follow the steps as dictated by the Ralink Wireless Utility Installer and click Continue:

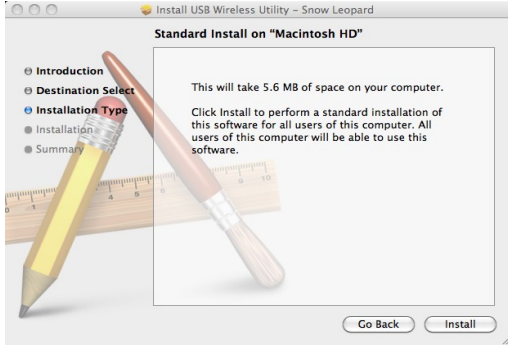


Quick Installation Guide for MAC OS X

© Dynamode UK Ltd, All Rights Reserved. All Trade Marks Acknowledged

5 Selecting the Destination and Install

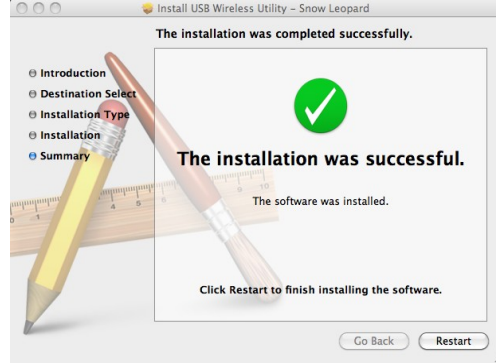
You maybe promoted by the software to select the destination drive. Follow the instructions and click Next:



Note: You maybe asked to enter a Username and Password if your MAC has Administrative Rights setup. If you do not have these you may not be able to continue.

6 Finishing the install and Restarting

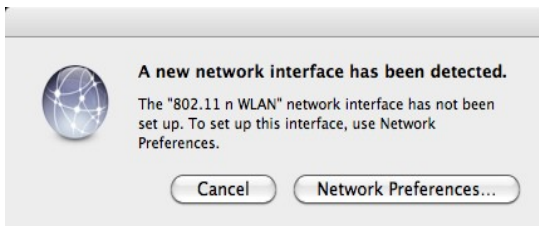
Once the files have been installed and optimized you will be prompted to Restart your MAC to complete the installation:



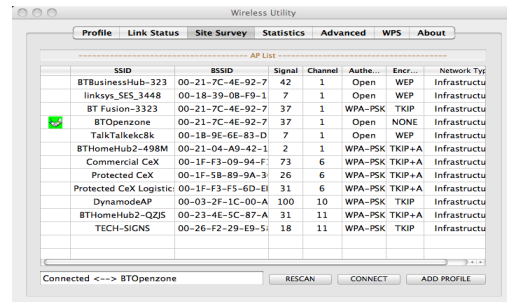
Note: You must re-boot your MAC to complete the installation of the Wireless Drivers and Utility. Only once this has been done should you plug in your Wireless USB.

7 Plugging in your Wireless USB

Locate a suitable USB Port on your MAC. Carefully plug in your WL-700N-M/MINI. Once connected and if installed correctly you maybe presented with the following:



Note: If you currently have your built-in Apple Wireless device running this may need to be turned off to prevent a device conflict. Please refer to your MAC User Guide.



Note: You may need to setup your Wireless IP Addressing and Encryption to connect to an available WLAN. Please refer to your MAC User Guide or System Administrator.

802.1x Wireless Setup on for your WL-700N-M/MINI on MAC OS X

Setting and configuring Wireless IP addressing and Encryption is beyond the scope of this Quick Installation Guide. However a separate downloadable article from Ralink Technology, Corp. covering correct usage of Wireless Encryption for both personal and business users.

To download [802.1x Instructions on Mac OS x.pdf](#) please go to www.dynamode-drivers.com and select your Wireless USB device as mentioned in Section 1 of this Quick Installation Guide. When in the MAC Driver window, please select 'PDF Instructions' on the MAC OS X Driver Link. Alternatively it can be located in the USBWireless-10.6 folder in the Installer program.